



**Kent Exiles American Football Club
Safeguarding Adults Policy and Procedures**

Introduction

Kent Exiles British American Football Club is committed to creating and maintaining a safe and positive environment and accepts our responsibility to safeguard the welfare of all adults involved in Kent Exiles British American Football Club in accordance with the Care Act 2014.

Kent Exiles British American Football Club safeguarding Adults policy and procedures apply to all individuals involved in Kent Exiles British American Football Club

Kent Exiles British American Football Club will encourage and support partner organisations, including clubs, suppliers, and sponsors to adopt and demonstrate their commitment to the principles and practice of equality as set out in this safeguarding adults policy and procedures.

Index:

Introduction Principles.....	2
Guidance and Legislation	3
Definitions.....	4
Types of abuse and neglect.....	5
Signs and indicators of abuse.....	6
What to do if you have a concern.....	7
How to record a disclosure.....	8
Safeguarding Adults Flow Chart	9
9 Roles and responsibilities.....	10
10 Good practice, poor practice and abuse	11
Relevant policies	12
Further Information.....	13

Appendix 1 – Incident Report Form

2.1 Principles

2.1 The guidance given in the policy and procedures is based on the following principles:

The Care Act sets out the following six principles that should underpin safeguarding of adults

Empowerment - People being supported and encouraged to make their own decisions and informed consent. “I am asked what I want as the outcomes from the safeguarding process and these directly inform what happens.”

Prevention – It is better to take action before harm occurs. “I receive clear and simple information about what abuse is, how to recognise the signs and what I can do to seek help.”

Proportionality – The least intrusive response appropriate to the risk presented. “I am sure that the professionals will work in my interest, as I see them and they will only get involved as much as needed.”

Protection – Support and representation for those in greatest need. “I get help and support to report abuse and neglect. I get help so that I am able to take part in the safeguarding process to the extent to which I want.”

Partnership – Local solutions through services working with their communities. Communities have a part to play in preventing, detecting and reporting neglect and abuse “I know that staff treat any personal and sensitive information in confidence, only sharing what is helpful and necessary. I am confident that professionals will work together and with me to get the best result for me.”

Accountability – Accountability and transparency in delivering safeguarding. “I understand the role of everyone involved in my life and so do they.”

2.1.2 All adults, regardless of age, ability or disability, gender, race, religion, ethnic origin, sexual orientation, marital or gender status have the right to be protected from abuse and poor practice and to participate in an enjoyable and safe environment.

2.1.3 Kent Exiles British American Football Club will seek to ensure that our sport is inclusive and make reasonable adjustments for any ability, disability or impairment, we will also commit to continuous development, monitoring and review.

2.1.4 The rights, dignity and worth of all adults will always be respected.

2.1.5 We recognise that ability and disability can change over time, such that some adults may be additionally vulnerable to abuse, for example those who have a dependency on others or have different communication needs.

2.1.6 We recognise that a disabled adult may or may not identify themselves or be identified as an adult ‘at risk’.

2.1.7 We all have a shared responsibility to ensure the safety and well-being of all adults and will act appropriately and report concerns whether these concerns arise within Kent Exiles British American Football Club for example inappropriate behaviour of a coach, or in the wider community.

2.1.8 All allegations will be taken seriously and responded to quickly in line with Kent Exiles British American Football Club Safeguarding Adults Policy and Procedures.

2.1.9 Kent Exiles British American Football Club recognises the role and responsibilities of the statutory agencies in safeguarding adults and is committed to complying with the procedures of the Local Safeguarding Adults Boards.

3 Guidance and Legislation

3.1 The practices and procedures within this policy are based on the principles contained within the UK and legislation and Government Guidance and have been developed to complement the Safeguarding Adults Boards policy and procedures, and take the following into consideration:

- The Care Act 2014

- The Protection of Freedoms Act 2012
- Domestic Violence, Crime and Victims (Amendment) Act 2012
- The Equality Act 2010
- The Safeguarding Vulnerable Groups Act 2006
- Mental Capacity Act 2005
- Sexual Offences Act 2003
- The Human Rights Act 1998
- The Data Protection Act 1994 and 1998

4 Definitions

4.1 To assist working through and understanding this policy a number of key definitions need to be explained:

4.1.1 **Adult at Risk** is a person aged 18 or over who is in need of care and support regardless of whether they are receiving them, and because of those needs are unable to protect themselves against abuse or neglect. In recent years there has been a marked shift away from using the term 'vulnerable' to describe adults potentially at risk from harm or abuse.

4.1.2 **Abuse** is a violation of an individual's human and civil rights by another person or persons. See section 5 for further explanations.

4.1.3 **Adult** is anyone aged 18 or over.

4.1.4 **Adult safeguarding** is protecting a person's right to live in safety, free from abuse and neglect.

4.1.5 **Capacity** refers to the ability to make a decision at a particular time, for example when under considerable stress. The starting assumption must always be that a person has the capacity to make a decision unless it can be established that they lack capacity (MCA 2005)

5 Types of Abuse and Neglect - Definitions from the Care Act 2014

5.1 This is not intended to be an exhaustive list but an illustrative guide as to the sort of behaviour or issue which could give rise to a safeguarding concern.

5.1.1 **Self-neglect** – this covers a wide range of behaviour: neglecting to care for one's personal hygiene, health or surroundings and includes behaviour such as hoarding. In American Football, this could be a player whose appearance becomes unkempt, does not wear suitable sports kit and deterioration in hygiene.

5.1.2 **Modern Slavery** – encompasses slavery, human trafficking, forced labour and domestic servitude. Traffickers and slave masters use whatever means they have at their disposal to coerce, deceive and force individuals into a life of abuse, servitude and inhumane treatment. In (insert name of your sport) you may notice that a participant in a team has been missing from practice sessions and is not responding to reminders from team members or coaches.

5.1.3 **Domestic Abuse** – including psychological, physical, sexual, financial and emotional abuse. It also includes so called 'honour' based violence. Sport may notice a power imbalance between a participant and a family member. For example a participant

with Downs syndrome may be looking quiet and withdrawn when their brother comes to collect them from sessions, in contrast to their personal assistant whom they greet with a smile.

5.1.4 Discriminatory – discrimination is abuse which centres on a difference or perceived difference particularly with respect to race, gender or disability or any of the protected characteristics of the Equality Act. This could be the harassing of a club member because they are or are perceived to be transgender

5.1.5 Organisational Abuse – including neglect and poor care practice within an institution or specific care setting such as a hospital or care home, for example, or in relation to care provided in one's own home. This may range from one off incidents to on-going ill-treatment. It can be through neglect or poor professional practice as a result of the structure, policies, processes and practices within an organisation. In (insert name of your sport), this could be training without a necessary break.

5.1.6 Physical Abuse – includes hitting, slapping, pushing, kicking, misuse of medication, restraint or inappropriate sanctions. This could be a coach intentionally striking an athlete.

5.1.7 Sexual Abuse – including rape, indecent exposure, sexual harassment, inappropriate looking or touching, sexual teasing or innuendo, sexual photography, subjection to pornography or witnessing sexual acts, indecent exposure and sexual assault or sexual acts to which the adult has not consented or was pressured into consenting. This could be a fellow athlete who sends unwanted sexually explicit text messages to a learning-disabled adult they are training alongside.

5.1.8 Financial or Material Abuse – including theft, fraud, internet scamming, coercion in relation to an adult's financial affairs or arrangements, including in connection with wills, property, inheritance or financial transactions, or the misuse or misappropriation of property, possessions or benefits. This could be someone taking equipment from an athlete with dementia.

5.1.9 Neglect – including ignoring medical or physical care needs, failure to provide access to appropriate health social care or educational services, the withholding of the necessities of life, such as medication, adequate nutrition and heating. This could be a coach not ensuring athletes have access to water.

5.1.10 Emotional or Psychological Abuse – this includes threats of harm or abandonment, deprivation of contact, humiliation, blaming, controlling, intimidation, coercion, harassment, verbal abuse, isolation or withdrawal from services or supportive networks. This could be an athlete threatening another athlete with physical harm and persistently blaming them for poor performance.

5.2 Not included in the Care Act 2014 but also relevant:

5.2.1 Cyber Bullying - cyber bullying occurs when someone repeatedly makes fun of another person online or repeatedly picks on another person through emails or text messages, or uses online forums with the intention of harming, damaging, humiliating or

isolating another person. It can be used to carry out many different types of bullying (such as racist bullying, homophobic bullying, or bullying related to special educational needs and disabilities) but instead of the perpetrator carrying out the bullying face-to-face, they use technology as a means to do it.

5.2.2 Forced Marriage - forced marriage is a term used to describe a marriage in which one or both of the parties are married without their consent or against their will. A forced marriage differs from an arranged marriage, in which both parties consent to the assistance of a third party in identifying a spouse. The Anti-social Behaviour, Crime and Policing Act 2014 make it a criminal offence to force someone to marry.

5.2.3 Mate Crime - a 'mate crime' as defined by the Safety Net Project is 'when vulnerable people are befriended by members of the community who go on to exploit and take advantage of them. It may not be an illegal act but still has a negative effect on the individual.' Mate Crime is carried out by someone the adult knows and often happens in private. In recent years there have been a number of Serious Case Reviews relating to people with a learning disability who were murdered or seriously harmed by people who purported to be their friend.

5.2.4 Radicalisation - the aim of radicalisation is to attract people to their reasoning, inspire new recruits and embed their extreme views and persuade vulnerable individuals of the legitimacy of their cause. This may be direct through a relationship, or through social media.

6. Signs and indicators of abuse and neglect

6.1 Abuse can take place in any context and by all manner of perpetrator. Abuse may be inflicted by anyone in the club who an athlete comes into contact with. Or club members, workers, volunteers or coaches may suspect that an athlete is being abused or neglected outside of the club setting. There are many signs and indicators that may suggest someone is being abused or neglected, these include but are not limited to:

6.1.1 Unexplained bruises or injuries – or lack of medical attention when an injury is present.

6.1.2 Person has belongings or money going missing.

6.1.3 Person is not attending / no longer enjoying their sessions.

6.1.4 Someone losing or gaining weight / an unkempt appearance.

6.1.5 A change in the behaviour or confidence of a person.

6.1.6 They may self-harm.

6.1.7 They may have a fear of a particular group or individual.

6.1.8 They may tell you / another person they are being abused – i.e. a disclosure.

7 What to do if you have a concern or someone raises concerns with you.

7.1 You may become aware that abuse or poor practice is taking place, suspect abuse or poor practice may be occurring or be told about something that may be abuse or poor practice and you must report this to the Kent Exiles British American Football Club Welfare Officer, or, if the Welfare Officer is implicated then report to the Kent Exiles British American Football Club Chairman.

Club welfare officers

George Richardson – Club Welfare Officer – safeguarding@kentexiles.co.uk/ 07903218984
Claire Pester – Assistany Club Welfare Officer - claire.pesther@kentexiles.co.uk / 07810426666

7.2 If you are at an international event and have a concern then speak to the coach or a team official.

7.3 If you are concerned someone is in immediate danger, contact the police straight away.

7.4 It is important when considering your concern that you also consider the needs and wishes of the person at risk, taking into account the nature of the alert.

8 How to Record a Disclosure

8.1 Make a note of what the person has said using his or her own words as soon as practicable. Complete an Incident Form and submit to the Kent Exiles British American Football Club Welfare Officer.

8.2 As long as it does not increase the risk to the individual, you should explain to them that it is your duty to share your concern with your Welfare Officer.

8.3 Describe the circumstances in which the disclosure came about.

8.4 Take care to distinguish between fact, observation, allegation and opinion. It is important that the information you have is accurate.

8.5 Be mindful of the need to be confidential at all times, this information must only be shared with your Welfare Officer and others on a need to know basis.

8.6 If the matter is urgent and relates to the immediate safety of an adult at risk then contact the police immediately.

8.7 External Services

These are important contact of external services who may support the club with safeguarding matters:

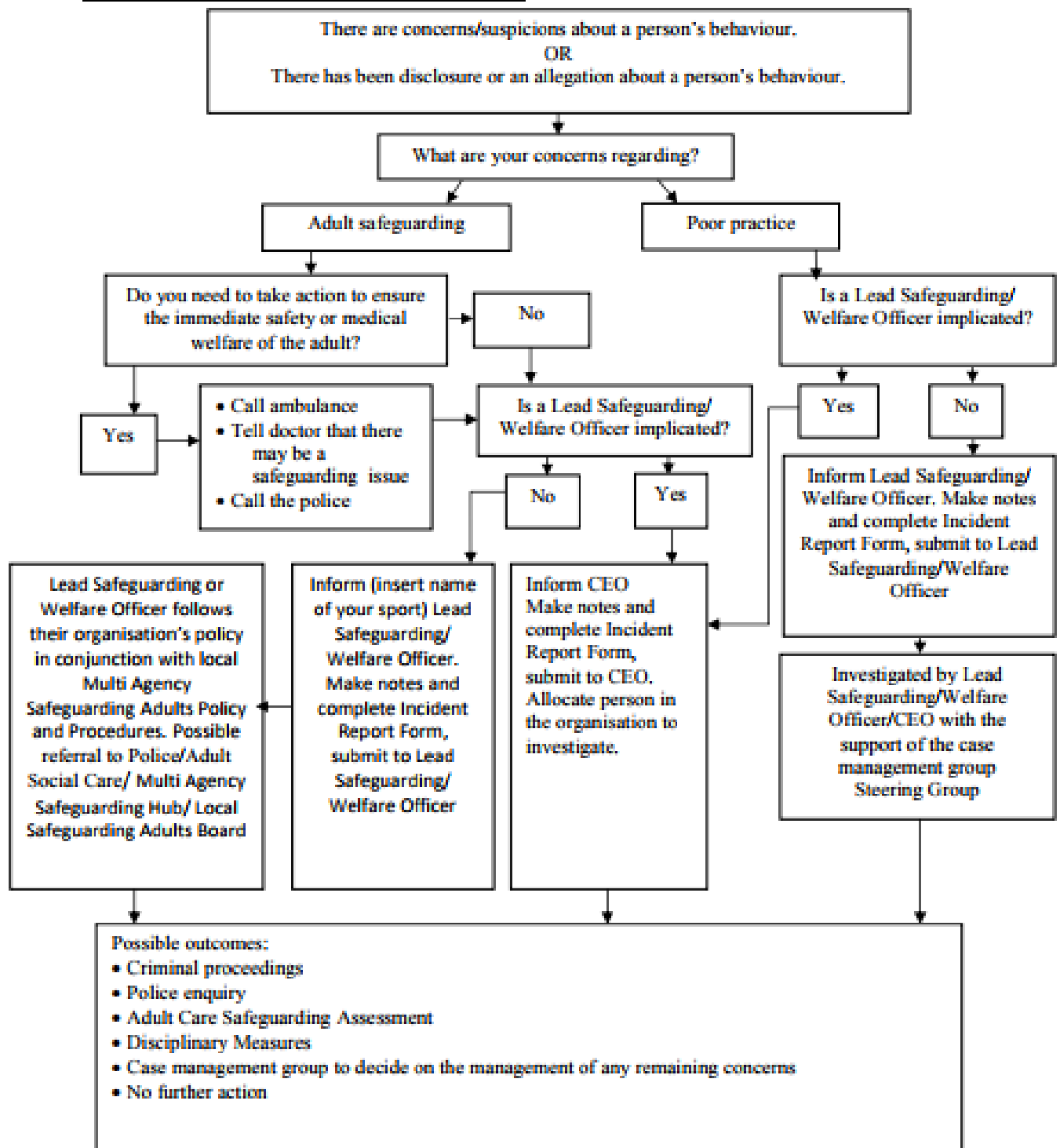
Bromley LADO - 0208 461 7775 or 0208 313 4325.

Bromley Adult Safeguarding Services – 2028 461 7777

Bromley Adult Safeguarding Services Out of hours – 0300 303 8671

IN AN EMERGENCY PLEASE DIAL THE EMERGENCY SERVICES - 999

9. Safeguarding Adults Flowchart
Dealing with Concerns, Suspicions or Disclosure



Remember to involve the adult at risk throughout the process wherever possible and gain consent for any referrals to social care if the person has capacity

10 Roles and responsibilities of those within Kent Exiles British American Football Club

10.1 Kent Exiles British American Football Club is committed to having the following in place:

- 10.1.1 A Welfare Officer to produce and disseminate guidance and resources to support the policy and procedures.
- 10.1.2 A clear line of accountability within the organisation for work on promoting the welfare of all adults.
- 10.1.3 Procedures for dealing with allegations of abuse or poor practice against members of staff and volunteers.

11 Good practice, poor practice and abuse

It can be difficult to distinguish poor practice from abuse, whether intentional or accidental. It is not the responsibility of any individual involved in Kent Exiles British American Football Club to make judgements regarding whether or not abuse is taking place, however, all Kent Exiles British American Football Club personnel have the responsibility to recognise and identify poor practice and potential abuse, and act on this if they have concerns.

11.1 Good practice

Everyone should:

- Aim to make the experience of Kent Exiles British American Football Club fun and enjoyable.
- Promote fairness and playing by the rules.
- Not tolerate the use of prohibited or illegal substances.
- Treat all adults equally and preserve their dignity; this includes giving more and less talented members of a group similar attention, time and respect.

Coaches and those working directly with adults at risk should:

- Respect the developmental stage of each athlete and not risk sacrificing their welfare in a desire for team or personal achievement.
- Ensure that the training intensity is appropriate to the physical, social and emotional stage of the development of the athlete.
- Build relationships based on mutual trust and respect, encouraging adults at risk to take responsibility for their own development and decision making.
- Always be publicly open when working with adults at risk:
 - avoid coaching sessions or meetings where a coach and an individual athlete are completely unobserved.

- Avoid unnecessary physical contact with people.
Physical contact (touching) can be appropriate so long as:
 - It is neither intrusive nor disturbing.
 - The athlete's permission has been openly given.
 - It is delivered in an open environment.
 - It is needed to demonstrate during a coaching session.
- Maintain a safe and appropriate relationship with athletes and avoid forming intimate relationships with athletes you are working with as this may threaten the position of trust and respect present between athlete and coach.
- Be an excellent role model by maintaining appropriate standards of behaviour.
- Be aware of medical conditions, disabilities, existing injuries and medicines being taken and keep written records of any injury or accident that occurs, together with details of treatments provided.
- Arrange that someone with current knowledge of emergency first aid is available at all times.

11.2 Poor practice

The following are regarded as poor practice and should be avoided:

- Unnecessarily spending excessive amounts of time alone with an individual adult.
- Engaging in rough, physical or sexually provocative games, including horseplay.
- Allowing or engaging in inappropriate touching of any form.
- Using language that might be regarded as inappropriate by the adult and which may be hurtful or disrespectful.
- Making sexually suggestive comments, even in jest.
- Reducing an adult to tears as a form of control.
- Letting allegations made by an adult go un-investigated, unrecorded, or not acted upon.
- Taking an adult at risk alone in a car on journeys, however short.
- Inviting or taking an adult at risk to your home or office where they will be alone with you.
- Sharing a room with an adult at risk.
- Doing things of a personal nature that adults at risk can do for themselves.

Note: At times it may be acceptable to do some of the above. In these cases, to protect both the adult at risk and yourself, seek written consent from the adult at risk and, where appropriate and ensure that the Welfare Officer of your organisation is aware of the situation and gives their approval.

If, during your care, an adult at risk suffers any injury, seems distressed in any manner, appears to be sexually aroused by your actions, or misunderstands/misinterprets something you have done, report these incidents as soon as possible to another adult in the organisation and make a brief written note of it.

12 Further Information

Policies, procedures and supporting information are available on the Kent Exiles British American Football Club website

This policy will be reviewed every two years or sooner in the event of legislative changes or revised policies and best practice.

Declaration

On behalf of Kent Exiles we, the undersigned, will oversee the implementation of the Child Protection Policy and take all necessary steps to ensure it is adhered to.

Signed:

(n.b. One of the signatories should be the Welfare Officer)

Name:

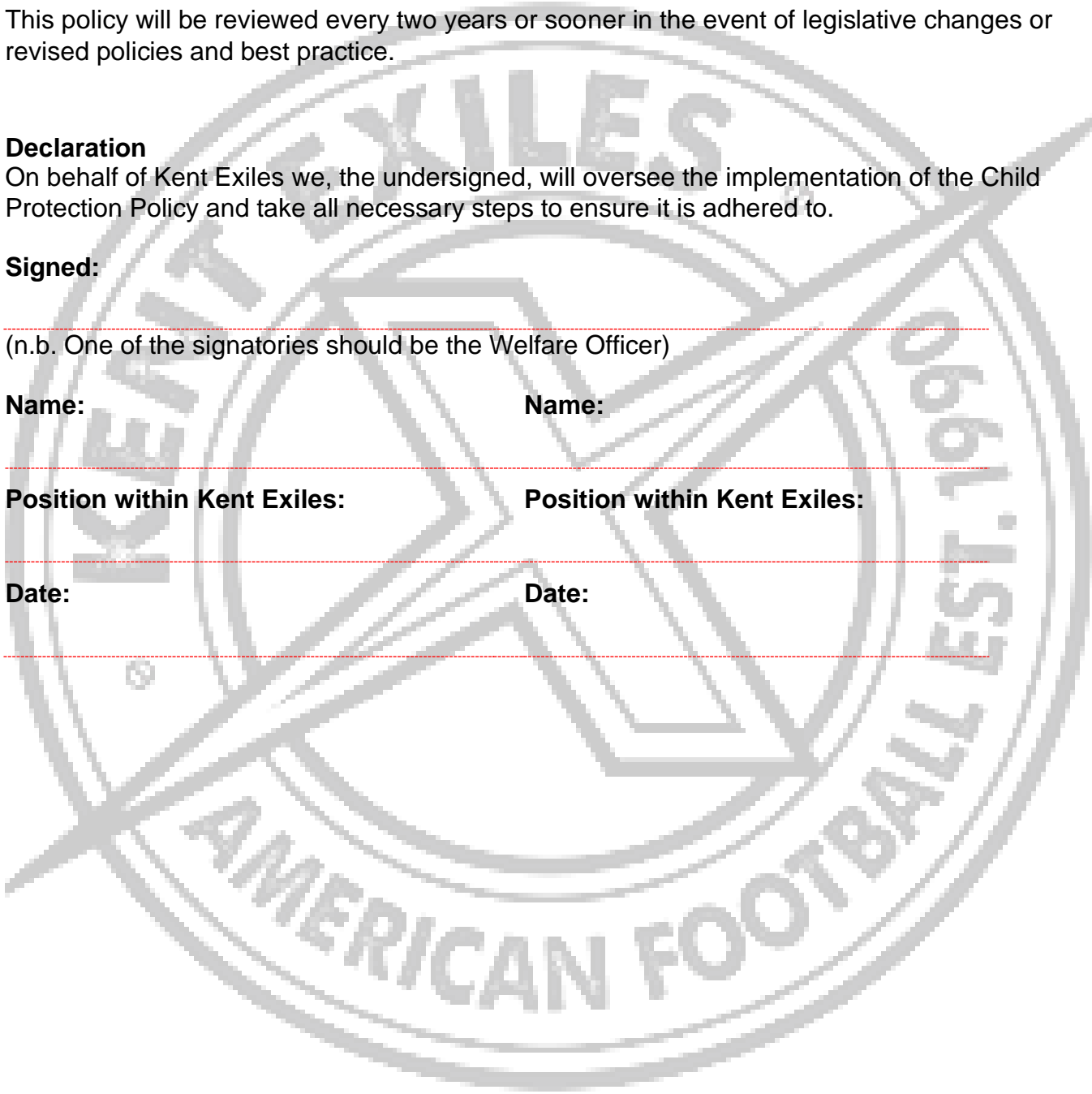
Name:

Position within Kent Exiles:

Position within Kent Exiles:

Date:

Date:



Appendix 1

Incident Report_Form Kent Exiles British American Football Team

Details of young person/vulnerable adult at risk

Name	
Position	
Date of Birth	
Age	
Address	
Telephone Number	
Name of parent/carer	
Contact details for parent/carer	

Date concern received:

Name of person reporting the concern:	
---------------------------------------	--

Contact details of person reporting concern

Name	
Telephone Number	

**Details of others involved in concern
(if more space needed add on a separate sheet of paper)**

Details of the concern

Date/Time	
Location	
Persons involved/witnesses:	

Nature of concern

How did the concern come to your attention?

Observations: e.g changes in behaviour, inappropriate actions, injuries, etc

Record of conversation: Details of exactly what was said to you and by you:

Action taken:

Contacts Made

Police	Yes / No	If yes please state
Contact name and number		Details of advice received:
Social Services	Yes / No	If yes please state
Contact name and number		Details of advice received:
Other (eg NSPCC)	Yes / No	If yes please state
Contact name and number		Details of advice received:

Summary

You may wish to discuss your concerns with someone outside of the organisation to gain reassurance. The NSPCC Helpline can help with this, and is confidential.

NSPCC Helpline: 0808 800 5000

